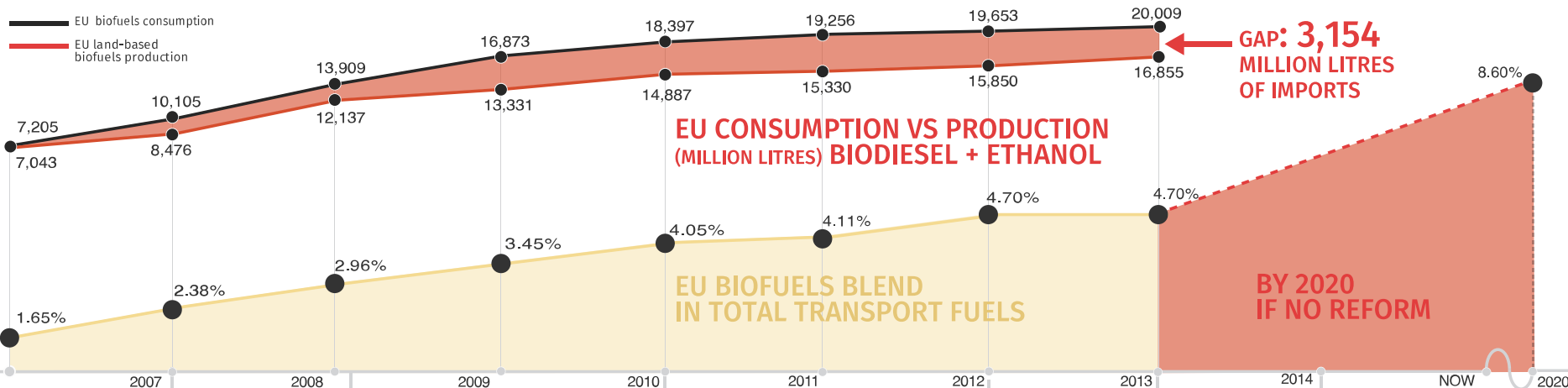


— EU biofuels consumption
 — EU land-based biofuels production



EU CONSUMPTION VS PRODUCTION (MILLION LITRES) BIODIESEL + ETHANOL

EU BIOFUELS BLEND IN TOTAL TRANSPORT FUELS

GAP: 3,154 MILLION LITRES OF IMPORTS

BY 2020 IF NO REFORM

2003 2006 2007 2008 2009 2010 2011 2012 2013 2014 NOW 2020

May 2003
BIOFUELS DIRECTIVE aimed at promoting the use of biofuels for EU transport, puts in place 5.75% indicative target for biofuels in all transport fuels by 2010

January 2007
THE COMMISSION proposes to revise the Fuel Quality Directive (FQD) to include a 10% decarbonisation target for transport fuels by 2020

March 2007
EUROPEAN COUNCIL puts in place a target for biofuels provided that they are sustainable and that second generation is commercially available 10% target for biofuels by 2020

January 2008
PUBLICATION OF EC PROPOSAL of the Renewable Energy Directive (RED). The EP decided to have consistent sustainability criteria in both the RED and the FQD 10% target by 2020 and sustainability criteria for biofuels, but no ILUC (just direct land-use change emissions are part of the sustainability criteria)

June / September 2008
PARLIAMENT VOTES and both ENVI (June) and ITRE (September) committees vote for ILUC to be included in the sustainability criteria Both committees also voted to lower the share of land-based (also known as first generation) biofuels that can count towards the mandatory target

April 2009
RED AND FQD BECOME EU LAWS EP loses most of its demands, but it gets a legislative mandate for the Commission to look into the ILUC issue and if necessary include it in the sustainability criteria The deadline for that is 31 December 2010

December 2010
THE COMMISSION comes out with a report saying that ILUC is a real issue and that they need to look into it in detail

The proposal caps food-based biofuels (not all land-based biofuels) at current levels of 5% of blending

October 2012
THE COMMISSION publishes a proposal to reform EU biofuels policy (RED and FQD); for the first time it assigns ILUC factors to different types of biofuels, but falls short of accounting for them for the climate performance of biofuels. Instead, it keeps ILUC factors only for reporting purposes

July 2013
THE EUROPEAN PARLIAMENT The Environment Committee of leading committee on the biofuels file, votes to include ILUC in sustainability criteria of the RED and to cap all land-based biofuels at 5.5% of the target

September 2013
THE PLENARY OF THE EP votes to cap all land-based biofuels at 6% and to include ILUC in the Fuel Quality Directive after 2020

June 2014
EUROPEAN COUNCIL comes to a common position on biofuels and ILUC. Europe's energy ministers decides to cap the use of land-based biofuels to 7% of transport fuel – higher than the original 5% cap as proposed by the Commission in 2012 Cap is also higher than the full Parliament's compromise of 6%. ILUC reporting gets water-downed even further

THE ENVIRONMENT COMMITTEE OF THE EUROPEAN PARLIAMENT needs to give its verdict on Council's position on biofuels reform

Sources:
 EU Biofuels Blend in TOTAL TRANSPORT FUELS: EurObserv'ER, Annual Biofuels Barometer (2007-2014)
 EU Biofuels Consumption: EurObserv'ER, Annual Biofuels Barometer (2007-2014)
 EU Biofuels Production: EurObserv'ER, Annual Biofuels Barometer (2007-2014)